

Windham, NH Historical Enrollment

School District: Windham, NH - SAU#95

11/5/2013

Historical Enrollment By Grade

Birth Year	Births	School Year	PK	K	1	2	3	4	5	6	7	8	9	10	11	12	UNGR	K-12	PK-12
1998	115	2003-04	0	250	250	175	188	151	228	214	193	177	174	176	159	141	0	2476	2476
1999	136	2004-05	0	223	223	201	169	188	151	210	205	192	155	176	164	155	0	2412	2412
2000	121	2005-06	0	230	230	187	208	179	187	154	211	208	165	173	161	171	0	2464	2464
2001	157	2006-07	0	242	242	187	188	211	187	182	159	209	161	166	162	174	0	2470	2470
2002	178	2007-08	0	249	249	202	199	196	215	194	180	159	180	154	168	149	0	2494	2494
2003	154	2008-09	0	281	281	198	211	204	199	209	199	186	138	171	152	164	0	2593	2593
2004	170	2009-10	16	169	205	260	207	207	205	202	214	197	192	131	0	0	0	2189	2205
2005	161	2010-11	7	180	220	208	253	209	208	209	202	214	185	188	127	0	0	2403	2410
2006	169	2011-12	11	185	232	226	212	253	216	212	206	198	210	178	181	126	0	2635	2646
2007	137	2012-13	12	187	226	242	234	223	257	220	214	210	216	198	171	173	0	2771	2783
2008	133	2013-14	10	169	242	230	246	238	231	243	222	219	212	195	199	170	0	2816	2826

Historical Enrollment in Grade Combinations

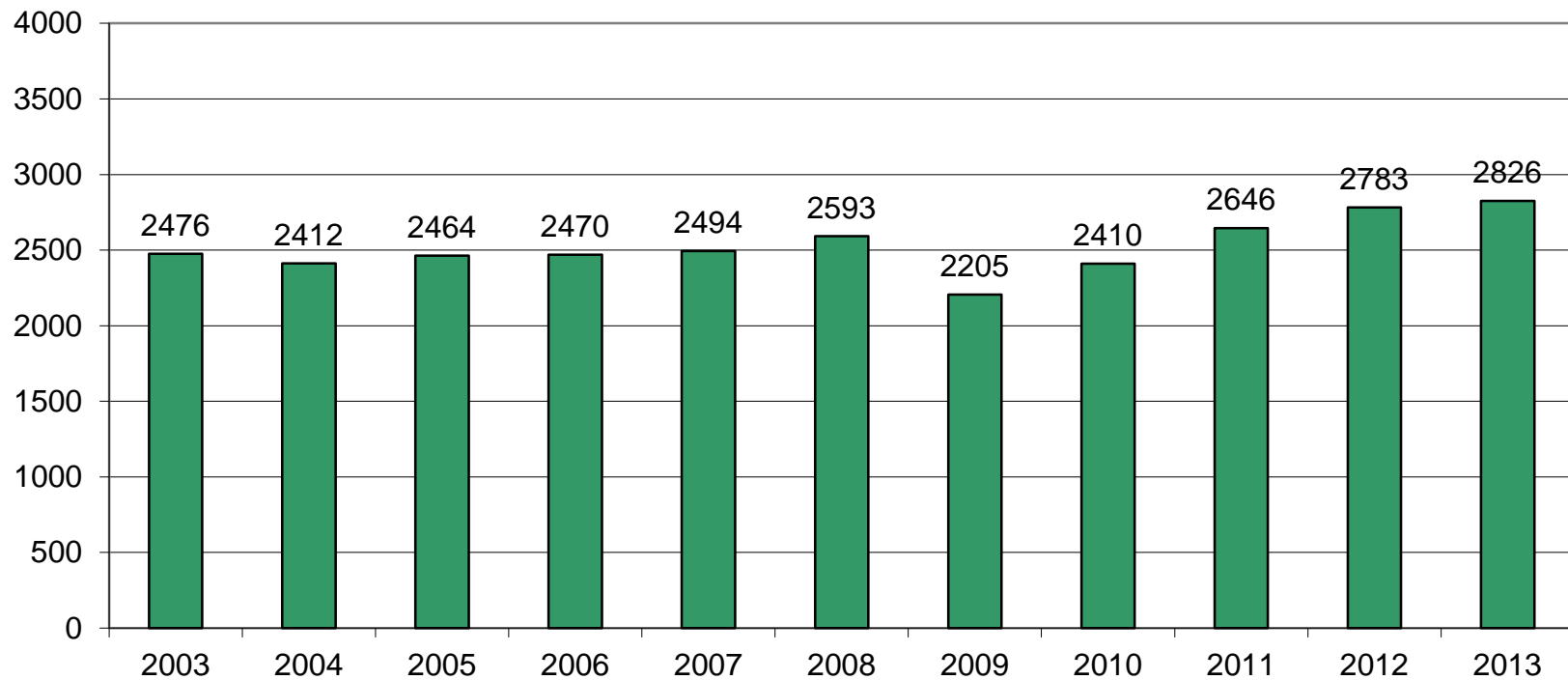
Year	K-2	K-5	3-5	K-8	5-8	6-8	7-8	7-12	9-12
2003-04	675	1242	567	1826	812	584	370	1020	650
2004-05	647	1155	508	1762	758	607	397	1047	650
2005-06	647	1221	574	1794	760	573	419	1089	670
2006-07	671	1257	586	1807	737	550	368	1031	663
2007-08	700	1310	610	1843	748	533	339	990	651
2008-09	760	1374	614	1968	793	594	385	1010	625
2009-10	634	1253	619	1866	818	613	411	734	323
2010-11	608	1278	670	1903	833	625	416	916	500
2011-12	643	1324	681	1940	832	616	404	1099	695
2012-13	655	1369	714	2013	901	644	424	1182	758
2013-14	641	1356	715	2040	915	684	441	1217	776

Historical Percentage Changes

Year	K-12	Diff.	%
2003-04	2476	0	0.0%
2004-05	2412	-64	-2.6%
2005-06	2464	52	2.2%
2006-07	2470	6	0.2%
2007-08	2494	24	1.0%
2008-09	2593	99	4.0%
2009-10	2189	-404	-15.6%
2010-11	2403	214	9.8%
2011-12	2635	232	9.7%
2012-13	2771	136	5.2%
2013-14	2816	45	1.6%
Change	340	13.7%	

Windham, NH Historical Enrollment

PK-12, 2003-2013



Windham, NH Projected Enrollment

School District: Windham, NH - SAU#95

11/5/2013

Enrollment Projections By Grade*																				
Birth Year	Births		School Year	PK	K	1	2	3	4	5	6	7	8	9	10	11	12	UNGR	K-12	PK-12
2008	133		2013-14	10	169	242	230	246	238	231	243	222	219	212	195	199	170	0	2816	2826
2009	109		2014-15	11	136	214	249	235	252	245	230	243	224	225	198	190	195	0	2836	2847
2010	124		2015-16	12	154	172	220	255	240	259	244	230	245	230	211	193	186	0	2839	2851
2011	124	(prov.)	2016-17	13	154	195	177	225	261	247	258	244	232	252	215	206	189	0	2855	2868
2012	125	(est.)	2017-18	14	156	195	201	181	230	268	246	258	246	238	236	210	202	0	2867	2881
2013	123	(est.)	2018-19	15	153	198	201	206	185	237	267	246	260	253	223	230	206	0	2865	2880
2014	121	(est.)	2019-20	16	151	194	204	206	211	190	236	267	248	267	237	218	226	0	2855	2871
2015	124	(est.)	2020-21	17	154	191	200	209	211	217	189	236	269	255	250	231	214	0	2826	2843
2016	123	(est.)	2021-22	18	153	195	197	205	214	217	216	189	238	276	239	244	227	0	2810	2828
2017	123	(est.)	2022-23	19	153	194	201	202	210	220	216	216	190	244	258	233	239	0	2776	2795
2018	123	(est.)	2023-24	20	153	194	200	206	207	216	219	216	218	195	228	252	229	0	2733	2753

*Projections should be updated on an annual basis.

Based on an estimate of births

Based on children already born

Based on students already enrolled

Projected Enrollment in Grade Combinations*									
Year	K-2	K-5	3-5	K-8	5-8	6-8	7-8	7-12	9-12
2013-14	641	1356	715	2040	915	684	441	1217	776
2014-15	599	1331	732	2028	942	697	467	1275	808
2015-16	546	1300	754	2019	978	719	475	1295	820
2016-17	526	1259	733	1993	981	734	476	1338	862
2017-18	552	1231	679	1981	1018	750	504	1390	886
2018-19	552	1180	628	1953	1010	773	506	1418	912
2019-20	549	1156	607	1907	941	751	515	1463	948
2020-21	545	1182	637	1876	911	694	505	1455	950
2021-22	545	1181	636	1824	860	643	427	1413	986
2022-23	548	1180	632	1802	842	622	406	1380	974
2023-24	547	1176	629	1829	869	653	434	1338	904

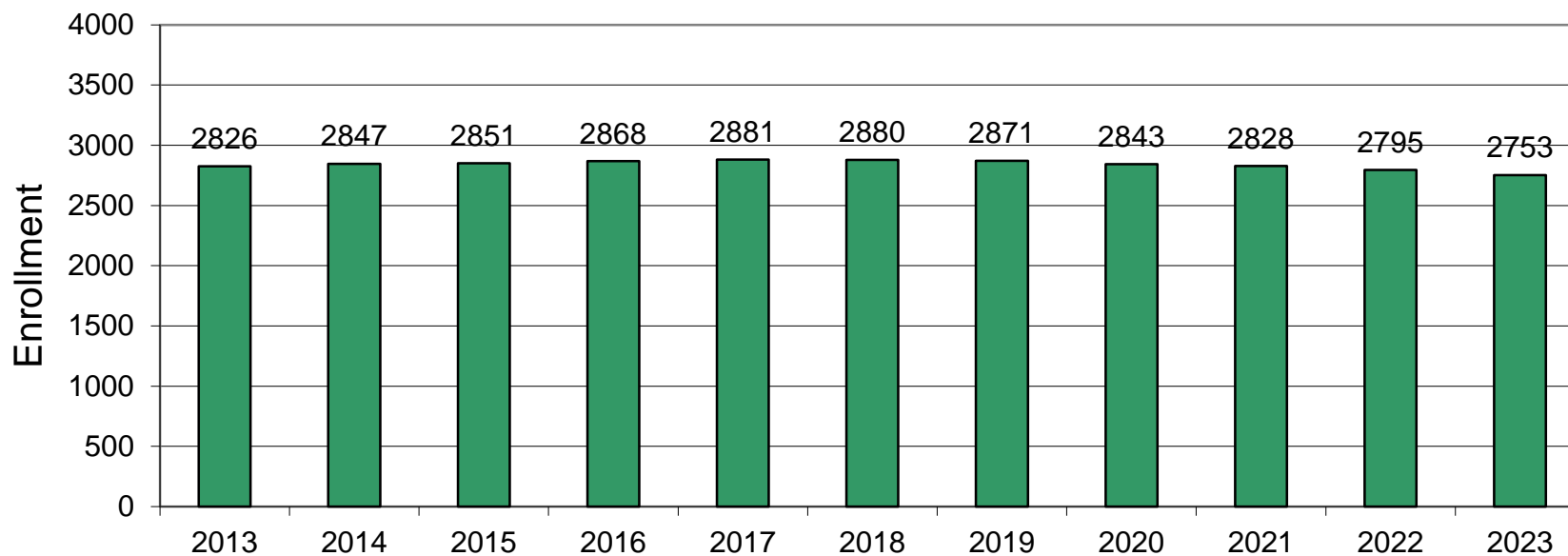
Projected Percentage Changes			
Years	K-12	Diff.	%
2013-14	2816	0	0.0%
2014-15	2836	20	0.7%
2015-16	2839	3	0.1%
2016-17	2855	16	0.6%
2017-18	2867	12	0.4%
2018-19	2865	-2	-0.1%
2019-20	2855	-10	-0.3%
2020-21	2826	-29	-1.0%
2021-22	2810	-16	-0.6%
2022-23	2776	-34	-1.2%
2023-24	2733	-43	-1.5%
Change		-83	-2.9%

See "Reliability of Enrollment Projections" section of accompanying letter.

Projections are more reliable for Years #1-5 in the future than for Years #6 and beyond.

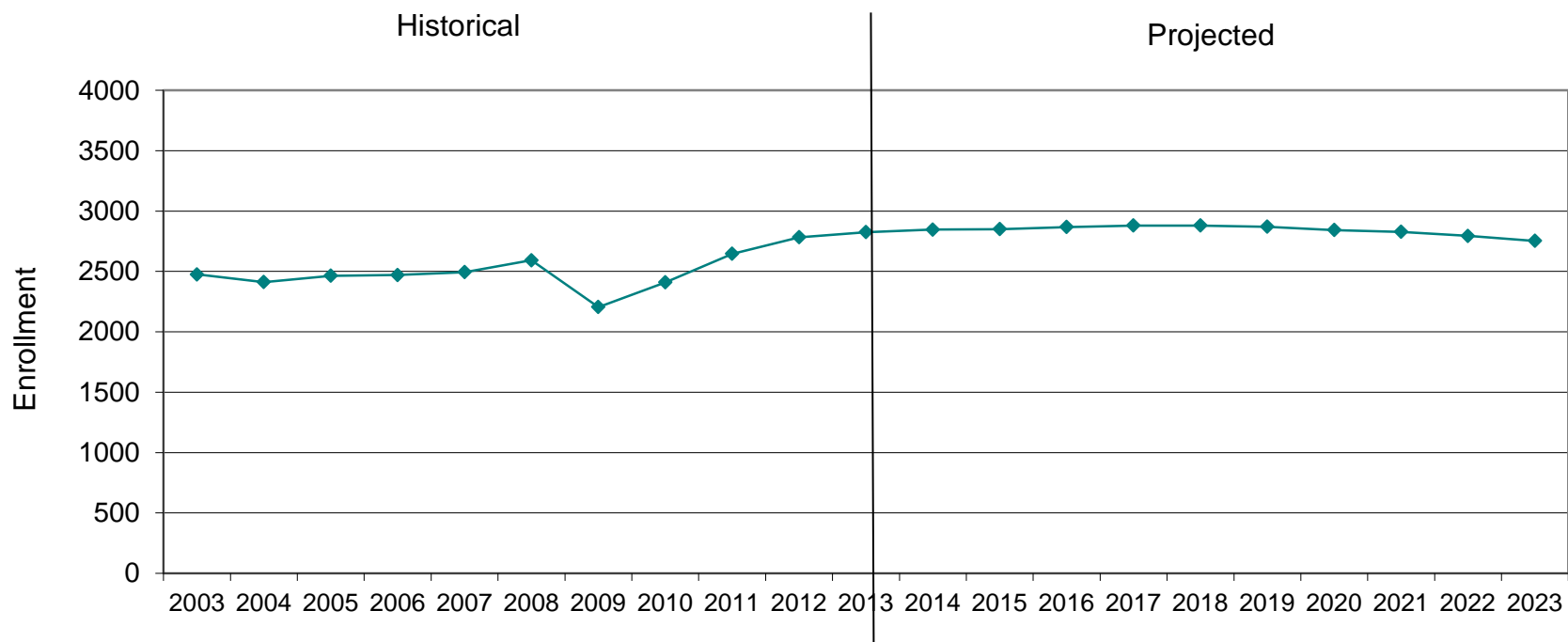
Windham, NH Projected Enrollment

PK-12 TO 2023 Based On Data Through School Year 2013-14

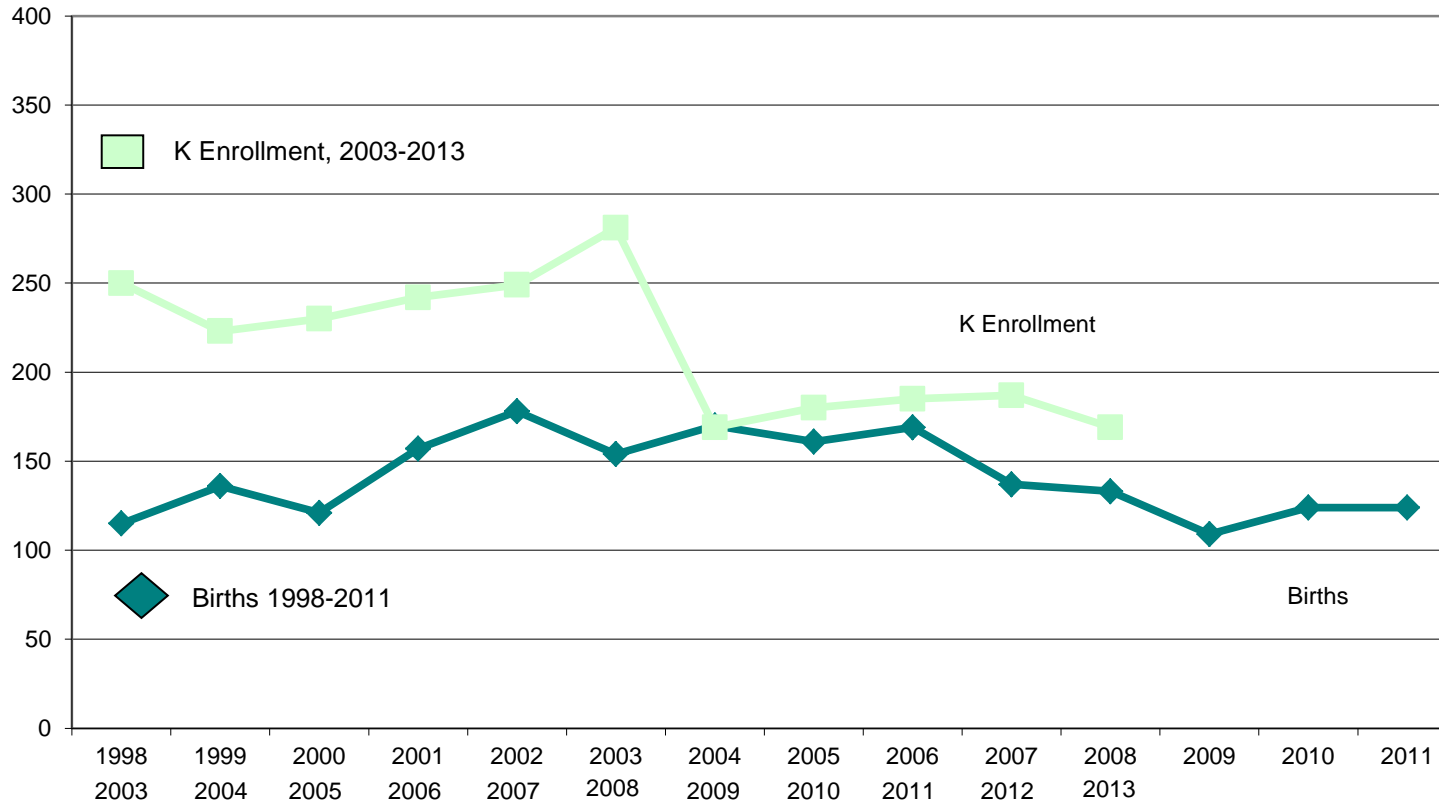


Windham, NH Historical & Projected Enrollment

PK-12, 2003-2023



Windham, NH Birth-to-Kindergarten Relationship



Windham, NH Additional Data

Building Permits Issued		
Year	Single-Family	Multi-Units
2005	128	0
2009	33	0
2010	77	0
2011	53	0
2012	37	9
2013	41 to Aug 31	6 to Aug 31

Source: HUD and Building Department

Enrollment History		
Year	Voc-Tech 9-12 Total	Non-Public K-12 Total
2005-06	n/a	n/a
2009-10	n/a	n/a
2010-11	n/a	n/a
2011-12	n/a	n/a
2012-13	n/a	n/a
2013-14	n/a	15

Residents in Non-Public Independent and Parochial Schools (Regular Education)														
Enrollments as of Oct. 1	K	1	2	3	4	5	6	7	8	9	10	11	12	K-12 TOTAL
	0	1	1	2	2	0	1	3	5	0	0	0	0	15

K-12 Home-Schooled Students	
2013	33

K-12 Residents "Choiced-out" or in Charter or Magnet Schools	
2013	36

K-12 SpEd Outplaced Students	
2013	21

K-12 Choiced-In, Tuitioned-In, & Other Non-Residents	
2013	0

The above data were used to assist in the preparation of the enrollment projections. If additional demographic work is needed, please contact our office.